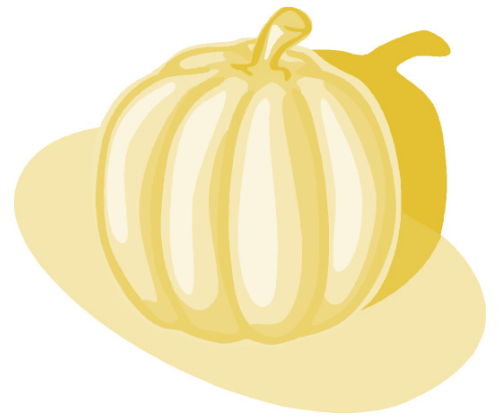


## Our Thanks for Jobs Well Done!

Many thanks to the following Boy Scouts for completing their Eagle Scout projects at the Center at Fairfield:

- To **James Belasco** for repairing boardwalk along Dirty Swamp Trail.
- To **Patrick Hoyt** for repairing boardwalk along Deer Meadow Trail.
- To **Ruari Clancy** for trail maintenance on Cottontail Cut-off and boardwalk repair on Streamside Trail.
- To **David Borowy** for boardwalk repair between Farm Pond and Streamside Trail.
- To **Joe Furniss** for trail marking along Muskrat Hollow, Oxcart, Dirty Swamp and Fox Run trails and for boardwalk repair along Muskrat Hollow Trail.
- To **Corey Franzen** for boardwalk repair on Muskrat Hollow Trail.
- To **Matt Marshall** for repair of the teaching platform at Farm Pond and a boardwalk on the back lawn.

There's always more work to be done! If your Cub Scout den or pack or your Scout troop is interested in a community service project, or if you are considering an Eagle Scout project at the Center at Fairfield or at the Birdcraft Museum and Sanctuary, please contact Carol Kratzman, Education Coordinator, at 203-259-6305 ext. 112 or ckratzman@ctaudubon.org.



### Pumpkin Patch Harvest

Sat., Nov. 17, 10:30-11:30 a.m.

What can you do with a pumpkin? You can eat it, decorate it and save the seeds for planting next year. Join us and make your very own pumpkin treats just in time for Thanksgiving. We'll cook them outside by the wigwam as we learn about foods the Native Americans ate. Did they plant pumpkins? Appropriate for ages 5 and up; children must be accompanied by an adult. Advance registration required. Space is limited. Fee: \$7/person (family max. \$21) CAS members, \$11/person (family max. \$33) Non-members.

### New Moon Hike

Fri., Dec. 7, 6:30-8 p.m.

Celebrate the New Moon. Grab your walking shoes and join us for a guided nighttime walk in the 155-acre Larsen Wildlife Sanctuary. What changes will we note as nature is preparing for winter? You never know what we might see or hear. If the sky is clear we'll search for some constellations. Program runs rain or shine. Advance registration required. Space is limited. Suitable for children ages 6 and up with an adult. Fee: \$7/person (family max. \$21) CAS members, \$11/person (family max. \$33) Non-members.

## Youth Programs

### Nature Nursery

Children ages 2-3 years old accompanied by an adult.

Mondays, 9:30-10:15 a.m. (New Time!)  
Sept. 24-Nov. 19. (No class Oct. 8.)

### FALL HARVEST

What do all the animals do in the fall? How do they prepare for winter? Where do the leaves go? Each week we will discover the answers to these very questions. Come join us as we discover fun facts, create cool crafts and meet exciting animals. Please wear appropriate outdoor attire and footwear. Program fee includes one child and one adult. Single program fee: \$10 CAS Members, \$14 Non-members. 8-program series fee: \$72 CAS Members, \$104 Non-members.

### Preschool

Children ages 3-5, must be toilet-trained and able to attend without an adult.

Wednesdays, 1:30-2:30 p.m.  
Sept. 26-Nov. 14. (No class Oct. 31.)

### FALL HARVEST

What do all the animals do in the fall? How do they prepare for winter? Where do the leaves go? Join our team of nature detectives as we gather clues and learn the answers to the wonders of fall. Programs include an outdoor exploration, a visit with a live animal, a story and a take home craft to round out the fun. Please wear appropriate outdoor attire and footwear. Single program fee: \$10 CAS Members, \$14 Non-members. 7-program series fee: \$63 CAS Members, \$91 Non-members.

### Young Biologists

Grades 3-5

Fridays, 4-5 p.m.  
Oct. 5-Nov. 16. (No class Oct. 26.)

Calling all young scientists! Join us as we explore the world outside our back door. This fall we will search for insects, birds and mammals and discover where amphibians and reptiles go for the winter. What happens to the animals as the seasons change from fall to winter? We will search the Sanctuary for clues, create experiments and study the Center's education animals to discover the answers to the questions. Single program fee: \$10 CAS Members, \$14 Non-members. 6-program series fee: \$54 CAS Members, \$78 Non-members.



A Black-capped Chickadee and a Goldfinch visit one of the Center at Fairfield's bird feeders. Photo by E.H. Soderberg

## Important Bird Seed Sale and Savings Day!

Sat., Oct. 6, 9 a.m.-3 p.m.

Migratory birds will soon stop at your backyard feeders. Our Birdseed Sale and Savings Day is the perfect opportunity to stock up on quality birdseed at terrific sale prices. CAS staff will help with advice on feeding and selecting seed – and we'll even load the seed in your car! Look for your birdseed flyer in the mail or pick one up at the Center to pre-order. Pre-orders are due September 21. We'll have plenty of seed on hand for walk-ins.

## Enchanted Forest

Fri., Oct. 26, 5:30-8 p.m.

Put on your costume and join us for a guided walk through our Enchanted Forest discovering the creatures that are awake at night. Our annual Halloween event is a fun, safe and low-key way to celebrate the autumn season. Before or after your walk, come inside for games, crafts, refreshments and to meet the Center at Fairfield's creepy, crawly and feathery critters. Guided walks leave on the half hour starting at 5:30 p.m. (5:30, 6, 6:30, 7, 7:30 p.m.). Call to reserve your space: 203-259-6305, ext. 109. Program held rain or moonshine. All proceeds support our education programs. Pre-registration is required. Payment required at time of registration.

Children must be accompanied by an adult. Fee: \$8/child, \$6/adult CAS Members, \$12/child, \$10/adult Non-members.

## Family & Adult Programs

### New Moon Hike

Fri., Nov. 9, 6:30-8 p.m.

Celebrate the New Moon. Grab your walking shoes and join us for a guided nighttime walk in the 155-acre Larsen Wildlife Sanctuary. A clear night during the New Moon phase is a wonderful time for stargazing. If the sky is clear we'll search the sky for constellations. If it's cloudy you never know what else we might see or hear closer to home. Program runs rain or shine. Advance registration required. Space is limited. Suitable for children ages 6 and up with an adult. Fee: \$7/person (family max. \$21) CAS members, \$11/person (family max. \$33) Non-members.

