

Connecticut Audubon Society Center at Glastonbury

1361 Main Street, Glastonbury, CT 06033-3105 • For more details or information, please call 860-633-8402

Family & Adult Programs

"In Transition: How to Create a Sustainable, Resilient Community"

Wed., April 28, 7-9 p.m.

Learn from the wisdom of the Transition Towns movement, which is sweeping the world, about how to energize your community to cope with global climate instability, depleted natural resources and an uncertain global economy. We'll watch the new video, "In Transition 1.0," then discuss action planning. Ralph Wood, who recently completed our 5-part "Moving from My Space to Our Space" lecture series, will be our moderator. Ralph is chair of the Center at Glastonbury's Executive Committee and a New Englander by birth. He has spent much time outside enjoying our natural world. Ralph holds three degrees from Brown University in Mechanical Engineering and is an adjunct professor at the National Graduate School. He is currently the principal of Accelerating Excellence, a small business that assists organizations with strategy, quality and productivity issues. Fee: \$5 CAS Members, \$7 Non-members.

Thursday Morning Early Bird(ing) Walks

April 29, May 6, 13, 7-9 a.m.

Join Larry Lunden in Earle Park for some great bird watching during spring migration. Bring your binoculars. Daily fee: \$5 CAS Members, \$7 Non-members.



"Art for Nature's Sake" Juried Show & Sale

May 15-16, 10 a.m.-4 p.m., rain or shine.

Come to this gem of an art show and sale where you can meet the artists, enjoy their art and crafts, and purchase great gifts for yourself, family and friends. Featuring a Kids' Art Table, Birdhouse Sale, Artists' Demonstrations, Live Music and "Artful" Lunch. The 21 featured artists are Laurie W. Gelston Alt (multiple media); Pat and Bob Benoit (glass); Lesley Braren (oils, watercolor); Liena Dieck (fiber); Leo P. Donahue (etching); Lois Flint Eldridge (ceramic); Dianne Gorrick (oil, watercolor, acrylic); Aline Hoffman (Chinese brush painting); Carole A. Jeffries (oils); Barbara Jenkins (pastel and mixed media); Mary Lang Killilea (pastel and mixed media); Barbara Lussier (oils); Pat Morris (pastel); Susan Peifer (watercolor); Sylvina Rollins (oils); Edith Royce Schade (photography); Judith Secco (photography); Katherine Simmons (oils); Lynita Shimizu (woodcut); Jacqueline White (oils); and David Woodard (drawing). Free admission. A portion of all sales benefits our Center's year-round education programs.



Come to our gem of an art show, held rain or shine! Photo by Duffy.



Dave Magee's solstice figures adorn a tree. Photo by Susan Apito.

Summer Solstice

Sun., June 20, 8 p.m.

Come celebrate the longest day of the year! The sun now feels warmer, the plants are blooming, and the birds are back from their migration. Come hear about the legends, history, religions, folk lore and more surrounding the Summer Solstice. Join naturalist Kasha Breau and firekeeper Dave Magee in some joyful dancing, feasting and fun around the fire. Please pre-register. Fee: \$8 CAS Members, \$10 Non-members, \$5 for children under 10.

Youth Programs

Pee Wee Programs

For 1-3 year olds accompanied by an adult. Classes often go outside so dress appropriately. Please pre-register. Fee (includes 1 child & 1 adult): \$10/program, \$38 for 4-program series CAS Members; \$13/program, \$52 for 4-program series Non-members.

Spring Series

Tuesdays, 10-11 a.m.

May 4, 11, 18, 25.

A weekly walk in Earle Park will awaken the senses to emerging new plants, flowers, insects, frogs, mammals and birds. Each week adds new awareness to your outdoor experience. Spend some quality time in the sun and fresh air enjoying our natural world with your youngster.



CAS's Kasha Breau holds "Whinnie," a Screech Owl.

Wee Programs

For 3-5 year olds. Classes often go outside so dress appropriately. Please pre-register. Fee: \$10/program, \$38 for 4-program series CAS Members; \$13/program, \$52 for 4-program series Non-members.

Spring Series

Mondays, 1-2 p.m.

May 3, 10, 17, 24.

A weekly walk in Earle Park will awaken the senses to emerging new plants, flowers, insects, frogs, mammals and birds. Each week adds new awareness to your outdoor experience. Let your child spend some quality time in the sun and fresh air enjoying our natural world.

Our New Summer Programs!

Come to our new "Summer Outdoor Experience"! We've added a week-long morning or afternoon class filled with fun activities and time exploring our natural world. Plan to spend your time outside so put on bug spray and sunscreen before going out, bring your snack and water bottle, wear your favorite hat, and prepare to enjoy the sunshine and fresh air. Please pre-register for our week-long classes.



Get Outdoors Summer Club

For 5-12 year olds.

Sessions begin July 6, end Aug. 19.

Tuesdays thru Thursdays, 1:30-4 p.m.

Does your child spend too much time in front of the computer, Xbox or Wii, and needs more time outdoors getting fresh air and all the benefits the sun has to offer? Join our new Get Outdoors Summer Club and spend a few hours with our teacher-naturalists exploring the trails, pond, brook, woods and fields. There is always something happening outside. We'll take notes about the birds, mammals, reptiles and amphibians we see to add to our Citizen Science data. This is for the child who wants to explore and discover the world around us. Your child will need: a day pack; hat; water bottle; snack; hand wipes; paper towels; sunscreen; bug spray; notebook and 2 pencils; camera (optional); binoculars (optional); raincoat and boots for rain; sneakers for the pond or stream; and enthusiasm for the outdoors. Please pre-register. Call if there is pouring rain that day, otherwise we will be outside in light rain. Fee: \$20/day CAS Members, \$30/day Non-members.

Summer Outdoor Experience 2010

Bring a snack and water bottle and get ready to spend your time outside exploring and learning about our natural world. Please make sure your child has applied sunscreen and bug spray before class starts, and has a hat.



A group of Wees explores our Center's plantings.



Young visitors explore some of nature's creations. Photo by Duffy.

For Summer Wees, ages 3-5, Tuesdays thru Thursdays, 9 a.m.-noon.

Weekly fee: \$125 CAS Members; \$180 Non-members (includes free 1-year CAS Family Membership). Pre-registration required.

July 6-8, "Slimy & Scaly Wonders"

Ever wonder how snakes eat something larger than their mouths? What does a land turtle eat in the wild and how fast do they move? Where can you find salamanders and snakes in Earle Park? The cold-blooded animals are on our hot list to find this week!

July 13-15, "Creepy Crawlies"

Flowers are not the only things that attract bugs, beetles and other creepy crawlies. We'll dig in the dirt, leaves and pond muck to find some insects that remain hidden from view. Wear your old sneakers and plan on getting muddy and dirty as we venture out into the woods and pond.

July 20-22, "Nature's Creations"

People are inspired by the form and function that is created in nature. Scientists, engineers and inventors have used ideas from the natural world to create items for human use: bridges, planes, buildings, jet engines. Get inspired by viewing spider webs, pine cones, wings, seeds and bee hives. Try your hand at making a spider web or bird nest or spinning a cocoon.

July 27-29, "It's For the Birds"

In the middle of the summer, the birds are busy nesting, feeding their young and teaching them to survive in the world. Can we find some of their homes? Can we spot the babies just fledged from the nests? What kinds of food can we provide to supplement their feedings? Come be a birder.

Aug. 3-5, "Predator-Prey Week"

Who eats who in the food chain? Have fun playing games like Bat and Moth, OH Deer, and Hawk and Mouse. What happens when there is a wrinkle in the food web?



Aug. 10-12, "Native Americans"

The Red Hill Indians once lived right here in Earle Park and the

(Continued on page 10)

Connecticut Audubon Society Center at Glastonbury

1361 Main Street, Glastonbury, CT 06033-3105
For more details or information, please call 860-633-8402

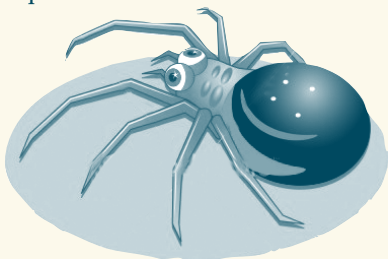
(Continued from page 9)

surrounding area. Play some games that the Native American children played to learn the skills that they needed to hunt. Help build a “twig-wam,” look for plant medicines, listen to the stories and learn to hide like an animal.

- **Aug. 16-18, “A Little Bit of Everything”**
Each day will cover one of our previous classes in case you missed one while you were on vacation. Tuesday it's Bugs; Wednesday it's Reptiles; and Thursday it's Birds.

For Summer Discoverers, ages 6-9, Mondays thru Fridays.

- **9 a.m.-noon weekly session fee:** \$175 CAS Members; \$230 Non-members (includes free 1-year CAS Family Membership). Pre-registration required.
- **1-4 p.m. weekly session fee:** \$140 CAS Members; \$195 Non-members (includes free 1-year CAS Family Membership). Pre-registration required.



- **July 5-9, “Slither, Hop & Crawl”**
Ever wonder how snakes eat something larger than their mouths? What does a land turtle eat in the wild and how fast do they move? Where can you find salamanders and snakes in Earle Park? The cold-blooded animals are on our hot list to find this week!
- **July 12-16, “Bug-a-thon”**
Flowers are not the only things that attract bugs, beetles and other creepy crawlies. We'll dig in the dirt, leaves and pond muck to find some insects that remain hidden from view. Wear

your old sneakers and plan on getting muddy and dirty as we venture out into the woods and pond.

- **July 19-23, “Nature's Creations”**
People are inspired by the form and function that is created in nature. Scientists, engineers and inventors have used ideas from the natural world to create items for human use: bridges, planes, buildings, jet engines. Get inspired by viewing spider webs, pine cones, wings, seeds and bee hives. Try your hand at making a spider web or bird nest or spinning a cocoon.
- **July 26-30, “It's For the Birds”**
In the middle of the summer, the birds are busy nesting, feeding their young and teaching them to survive in the world. Can we find some of their homes? Can we spot the babies just fledged from the nests? What kinds of food can we provide to supplement their feedings? Come be a birder!
- **Aug. 2-6, “Predator-Prey Week”**
Who eats who in the food chain? Have fun playing games like Bat and Moth, OH Deer, and Hawk and Mouse. What happens when there is a wrinkle in the food web?
- **Aug. 9-13, “Native Americans”**
The Red Hill Indians once lived right here in Earle Park and the surrounding area. Play some games that the Native American children played to learn the skills that they needed to hunt. Help build a “twig-wam,” look for plant medicines, listen to the stories and learn to hide like an animal.
- **Aug. 15-19, “A Little Bit of Everything”**
Each day will cover one of our previous classes in case you missed one while you were on vacation. Monday it's Nature's Creations; Tuesday it's Bugs; Wednesday it's Reptiles; Thursday it's Birds; and Friday it's Native Americans.

Connecticut Audubon Society Center at Pomfret

189 Pomfret Street (Rt. 169), Pomfret, CT 06259
For more details or information, please call 860-928-4948

Art Exhibits

“Out of the Woods”: Japanese Wood Cuts by Lynita Shimizu

Opening Reception: Sun., June 6, 2-4 p.m.
Exhibit & Sale through July 5.
“Out of the Woods” is an exhibit of whimsical, colorful woodcuts of birds, bugs, fish and other creatures by printmaker Lynita Shimizu. Lynita's woodblock prints have been exhibited in four continents but the source of her subject matter is the nature around her Pomfret home. To preview her work, visit her web site at <http://shimizu-woodcuts.com/>. A percentage from all sales will benefit the Center at Pomfret. Exhibit hours: Mondays-Fridays, 9 a.m.-4 p.m.; weekends, noon-4 p.m. Free admission.



Owl woodcut by Lynita Shimizu.

“The Four Seasons”: Oil Paintings by Karen McFarlin

Opening Reception: Sun., July 11, 2-4 p.m.
Exhibit & Sale through Aug. 27.
“Growing up on a dairy farm in Woodstock, I have always been interested in nature and the outdoors. Retiring from teaching has given me the time to paint what I have been seeing and feeling all these years.” Karen's fresh emerging style lends new simple life to her oil scenes. Whether coastal, architectural, or pastoral, all her works depict the four seasons of New England. Stop in to see the colors of nature on canvas, framed and ready to hang in your home. A percentage from all sales will benefit the Center at Pomfret. Exhibit hours: Mondays-Fridays, 9 a.m.-4 p.m.; weekends, noon-4 p.m. Free admission.



Oil painting of trees by Karen McFarlin.

Early Morning Bird Walks

Tuesdays, May 4, 11, 18, 25, 8 a.m.
& Mother's Day, Sun., May 9, 8 a.m.
Come join Sanctuary Manager Andy Rzeznikiewicz as he points out the various bird species. We have access to over 1,600 acres of protected land. Wear drab-colored clothing and bring binoculars (on some occasions a spotting scope is useful). Fee: free CAS members, \$5 Non-members.

After School Nature Club

- For Grades K-2: Tuesdays, May 4, 11, 18, 25, 3:30-5:15 p.m.
- For Grades 3-5: Thursdays, May 6, 13, 20, 27, 3:30-5:15 p.m.

Do your kids need some time to blow off steam after school? Send them to our Center. We will fill their afternoon with fresh air and hikes on the sanctuary with some lessons on wildlife quietly inserted when the right moment arises along the trail. Fee per session: \$35 CAS Members, \$45 Non-Members.

Wednesday Lunch Walks

May 5-Aug. 25 at noon.
Get out of the house or office to stretch your legs and clear your head. Join Connecticut Audubon Society staff for some fresh air and exercise. Seniors and parents with babes in backpacks welcome. Free.

Afternoon Bird Walk

Thurs., May 13, 5 p.m.
For those of you who can't make the morning walks, we offer this afternoon walk, during peak bird migration. Wear drab-colored clothing and bring binoculars. Fee: \$5 CAS Members, \$10 Non-members.

Thompson Bird Walk

Fri., May 14, 8 a.m.
We will visit a few conservation areas in Thompson, Connecticut, where Brown Creeper, Wood Duck, Broad-winged Hawk and numerous other birds should be found. Call to pre-register. Fee: \$7 CAS Members, \$15 Non-members.

First Annual “20 Warbler Day”

Sat., May 15, 6 a.m.-2 p.m.
We are going to attempt to find 20 species of warblers in one day! This is the height of warbler migration and we will be travelling to numerous locations in our search. Call to pre-register. Fee: \$15 CAS Members, \$30 Non-members.

Pumpkin Hill Bird Walk

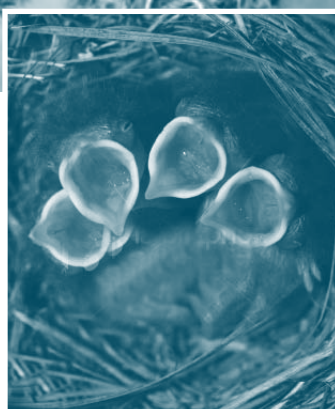
Sun., May 16, 8 a.m.
This is a large portion of state forest in Chaplin. CAS Sanctuary Manager Andy Rzeznikiewicz will lead a bird-watching group to numerous locations in the area. Expect to find Cerulean Warbler, Worm-eating Warbler, Prairie Warbler and numerous other songbirds. Fee: \$7 CAS Members, \$15 Non-members.

Third Sunday Afternoon Walks

Sun., May 16, 2 p.m.
Sun., June 20, 2 p.m.
Sun., July 18, 2 p.m.
Sun., Aug. 15, 2 p.m.
Longtime volunteer and naturalist Fran Baranski and other Center volunteers will lead walks on the Baffin Sanctuary and Wyndham Land Trust properties. Walk for fun and exercise, visiting different locations each week, and a tracking lesson will no doubt present itself. Fee: free CAS Members, \$3 Non-Members.

Fifth Annual “90 Bird Day”

Wed., May 19, 7 a.m.-4 p.m.
The goal is to hear or see at least 90 species of birds in nine hours or less. We will be visiting many locations within a 10-mile radius. Over the last five years we have found between 87 and 91 species each year. Interesting sightings from last year include Yellow-billed and Black-billed Cuckoos. Bring lunch, drinks, a snack and if you have them, binoculars or a spotting scope. Fee: \$20 CAS Members, \$35 Non-members. Call to pre-register!



Connecticut Audubon Society Center at Pomfret

189 Pomfret Street (Rt. 169), Pomfret, CT 06259 • For more details or information, please call 860-928-4948

Bird Banding Demonstration

Sat., May 22, 9 a.m.
Join Sanctuary Manager Andy Rzeznikiewicz and fellow bird banders to see various songbirds up close. You will see how we gently catch them, record data, and safely release the birds. Participants may release a bird. Fee: \$5 CAS Members, \$10 Non-members.



One of 19 American Kestrel chicks that were banded in Pomfret in 2009. Photo by James Cutler.

American Kestrel Banding

Late June or early July (exact date to be announced).
Call us to leave your name and phone number, to observe the banding of fledgling American Kestrels. Nineteen young kestrels were banded last year! Banding date and time will be determined when the young birds are ready. Fee: \$10 CAS Members, \$20 Non-members.

Evening Bird Walk

Thurs., July 15, 6 p.m.
Join Andy Rzeznikiewicz as we look for different bird species. We might find newly fledged young birds. Fee: \$5 CAS Members, \$10 Non-members.

Invasive Plants

Sat., July 17, 9 a.m.
Join Andy Rzeznikiewicz as he points out various invasive plants. He will talk about their history and how to control them. Fee: \$5 CAS Members, \$10 Non-members.

Evening Bird Walk

Thurs., Aug. 19, 6 p.m.
Join Andy Rzeznikiewicz as we look for different species of birds. We might find newly fledged young birds. Fee: \$5 CAS Members, \$10 Non-members.

Nighthawk Watch

Sat., Aug. 28, 6 p.m.
Join Andy Rzeznikiewicz as we wait and watch for migrating Common Nighthawks. Other bird species should be observed as well. Bring your binoculars. Fee: \$5 CAS Members, \$10 Non-members.

Summer Nature Camp

Join us for some real adventure this summer! Get ready to get dirty and explore the wonders of the natural world. Our groups are small, limited to 20 campers per week, so there's plenty of hands-on time with instructors. We'll catch crayfish, explore the woods, identify birds, plants and insects, go hiking and take great photos. Our adventures may include our 700-acre Bafflin Sanctuary in Pomfret, our 167-acre Trail Wood Sanctuary in Hampton, or field trips in northeastern Connecticut.

Camp runs Monday through Friday from 9 a.m.-4 p.m. except where noted. Campers must bring their own lunch; we supply a healthy afternoon snack. Weekly fee: \$195/child CAS Members; \$250/child Non-members. (Our Non-member fee includes a free 1-year CAS Family Membership.) Register today as space is limited. Call 860-928-4948 or e-mail sheminway@ctaudubon.org for more information.

Week 1, June 21-25

"Slime Crimes I" for ages 6-9.
In the water and in the mud, this week will be all about slimy critters (frogs, turtles, salamanders) and their prey (interesting insects, juicy worms, grubs). Wear old sneakers and plan to get wet and dirty!

Week 2, June 28-July 2

"Slime Crimes II" for ages 6-9.
A soggy continuation of Week 1: More muck-a-lucking, stream slogging, critter adventures and outdoor fun. It's all about getting wet and dirty!

Week 3, July 5-9

"The Mashamoquets" for ages 10-14.
This is local Native Americans week. We'll construct a life-sized wigwam, grind corn, research local tribes and names and work with animal hides, plus many more hands-on activities. Optional camping overnight on Thursday (\$30 extra) includes campfire cooking and a night hike.

Week 4, July 12-16

"Fins & Feathers" for ages 6-9.
We'll learn all about our native fish and birds with casting lessons, fishing, bird calls, bird banding, and a trip to the fish hatchery. We'll explore their behavior through games, activities and crafts, with plenty of stream slogging and hiking.

Week 5, July 19-23

"Awesome Animal Investigations" for ages 10-14.
Designed for the aspiring naturalist, we'll go mammal monitoring, horseshoe crab tagging, bird banding, and turtle tracking, working side by side with professional scientists. Plus biking the Airline Trail and an optional camping overnight on Thursday (\$30 extra).

Week 6, July 26-30

"Our Waters: Source to Sea" for ages 10-14.
Learn all about our Connecticut waters. Follow the rain into our streams then rivers and to the ocean. Construct a watershed, investigate water flow, conduct water quality sampling and see how hydraulic engineering is put to work. End the week with a trip to the beach.

Week 7, Aug. 2-6

"Surf & Turf" for ages 7 & older.
We'll be hiking our wildlife sanctuaries, berry picking, and going to the shore to discover marine life and enjoy old-fashioned summer fun. Mother Nature will dictate activities.

Week 8, Aug. 9-13

"Northeastern Connecticut Parks" for ages 7 & older.
We'll explore our parks and wildlife sanctuaries including Trail Wood, Wolf Den State Park, West Thompson Dam, and CT DEP's Airline Linear Park. Optional camping overnight on Thursday (\$30 extra): enjoy cooking over a campfire, a night hike, constellation lessons and night owl fun.

Week 8, Aug. 9-13, 9 a.m.-noon

"Nature Photography" for ages 10-14.
Learn about the environment through the camera lens. After a daily lesson in composition, we will head out onto our wildlife sanctuary with digital cameras in hand to capture the natural world, shooting, editing and printing our best photos and creating a photo album to take home. All materials included.



Private Guided Bird or Nature Walks

This service is offered year-round. Each walk can be geared toward your expectations and locations. Sanctuary Manager Andy Rzeznikiewicz can take you to your next "life bird," to local hot spots, or just use his knowledge to find birds and wildlife for you. Owl walks and private woodcock watches are very successful in small groups. This is an excellent gift for that outdoor enthusiast who has everything. Call us at 860-928-4948 for more information.

Programs offered to Groups and Libraries

We can bring the wildlife video or bird slide show programs right to you. Call for more information on each program.

New Service Offered: Bird Surveys on private or public property

Sanctuary Manager Andy Rzeznikiewicz is available to conduct bird population surveys and can provide habitat management recommendations for your property. Private property owners, Land Trusts, municipalities or other groups that want an inventory of what bird species they have breeding or using their property might be interested in this service. Conservation groups that are evaluating potential land purchases for conservation might find this service helpful as well. The best time of year to conduct nesting bird surveys is May and June. Call early to schedule as the calendar fills up fast this time of year.

Citizen Science Programs

Spring 2010 marked the beginning of our second year partnering with the U.S. Fish & Wildlife Service and the Canterbury Public Library to conduct Connecticut Audubon Society Citizen Science Volunteer Monitoring Projects in Canterbury. Volunteers from northeastern Connecticut and beyond are welcome to participate in all of our projects. Training sessions are held at the CAS Center at Pomfret. Registration is required for all projects; call 860-928-4948. (Field work dates are subject to change based on local weather.)

Vernal Pool Inventory 2010

Vernal pool season goes by quickly so don't miss the fun! On Friday and Saturday mornings in April and May, our trained volunteers document vernal pools in Canterbury, Pomfret and Woodstock. We tramp through woods, listen for wood frogs and count amphibian egg masses. If you missed the training in early April, it's not too late to train in the field by contacting Paula Coughlin, project coordinator, at 860-928-4948. Field training fee: \$7 CAS Members, \$15 Non-members. (Canterbury residents' training is free thanks to a USF&WS grant; Woodstock residents' fee will be reimbursed by the Woodstock Conservation Commission following their participation in field work.) We also welcome reports of vernal pool locations in the three towns.

Canterbury Grassland Birds Habitat Survey 2010

Have you heard a meadowlark this spring? Have you seen a kestrel hunting in a nearby field? Maybe you've noticed an "LBJ" (little brown job) with a yellowish eyebrow stripe in the grass – it could have been a Savannah Sparrow. These are just a few of the grassland bird species whose numbers have dwindled as grassland habitat disappears. Volunteers will be looking and listening for breeding grassland birds from June through mid-July.

• **Training at the Center at Pomfret:** Fri., June 4, and Sat., June 5, 9 a.m.-noon. Fee: \$7 CAS Members, \$15 Non-members, free for Canterbury residents (covered by USF&WS grant). Please call to register for one training session.



Volunteers sort insects while doing a "rapid bioassessment" of a local stream.

StreamWalk Project 2010

Walk along the stream bank, kayak or wade down a stream – it's a fun way to spend a summer morning while contributing to stream conservation in the Quinebaug River watershed. In one 3-hours session, volunteers learn how to report the physical characteristics of streams such as depth, vegetation and condition of the streambed. Once trained, participants can join Paula Coughlin, Citizen Science Coordinator, on field trips to collect data or work on selected stream segments on their own schedule from June through August.

• **Training at the Center at Pomfret:** Fri., June 11 and Sat., June 12, 9 a.m.-noon. Fee: \$7 CAS Members, \$15 Non-members, free for Canterbury residents (covered by USF&WS grant). Please call to register for one training session.

Rapid Bioassessment 2010

Did you know that aquatic insects are indicators of the health of a stream? Many of us recognize these fascinating insects only during their brief time as flying adults (dragonflies, mayflies, stoneflies and the like), but they spend most of their lives in water. Come dressed to muck about in the streams; we'll provide waders and nets and teach you how to do a stream assessment based on which insects we catch. This rapid assessment of stream water quality provides valuable data to the Connecticut Department of Environmental Protection and local conservation groups. Visit CT DEP's website to view data from past years. Data collection field trips will take place Friday and Saturday mornings in September and October.

• **Training at the Center at Pomfret:** Sat., Aug. 28 and Fri., Sept 3, 9 a.m.-noon. Fee: \$15, free for Canterbury residents. Please call to register for one training session.

Mammal Monitoring Program 2010

Our trained volunteers monitor study sites in Willington, Eastford and Woodstock quarterly. We now have eight years of data documenting the presence of large mammals such as fisher, river otter, black bear and bobcat. An additional study site, in Canterbury, will be selected in 2010. Begin or continue training to become a Citizen Science wildlife monitor by attending training hikes that suit your schedule throughout the seasons. The summer training hike is held on the Woodstock site alongside trained volunteers as they document mammal track and sign.

• **Training at the Woodstock site:** Sat., June 19, 9 a.m.-3 p.m. Fee: \$50 CAS Members, \$60 Non-members, free for Canterbury residents.

Pre-registration is required for all Citizen Science projects. For information contact Citizen Science Coordinator Paula Coughlin at 860-928-4948 or pcoughlin@ctaudubon.org.



Connecticut Audubon Society Center at Trail Wood

Edwin Way Teale Memorial Sanctuary

93 Kenyon Road, Hampton, CT 06247

For more details or information, please call 860-928-4948



Teale home at Trail Wood

The 168-acre Trail Wood Sanctuary is open daily, dawn to dusk year-round. The Edwin Way Teale Study and Writing Cabin are open to the public by appointment. Call 860-928-4948 to schedule a visit.

After School Nature Club

For Grades 2-5.

Weds., May 5, 12, 19, 26, 3:30-5:15 p.m.

Do your kids need some time to blow off steam after school? Send them to Trail Wood. We will fill their afternoon with fresh air and hikes on the sanctuary with some lessons on wildlife quietly inserted when the right moment arises along the trail. Fee per session: \$35 CAS Members, \$45 Non-Members.

Bird Walks

Sat., May 8, 8 a.m.

Thurs., May 13, 8 a.m.

Join Sanctuary Manager Andy Rzeznikiewicz as he walks around the various trails searching for various bird species. Hooded Warblers, Red-shouldered Hawks, Chestnut-sided Warblers and Louisiana Waterthrush can be found here regularly. Fee: free CAS Members, \$5 Non-members.

Second Sunday Afternoon Walks

Sun., May 9, 2 p.m.

Sun., June 13, 2 p.m.

Sun., July 11, 2 p.m.

Sun., Aug. 8, 2 p.m.

Stretch your legs and burn off those extra calories with an afternoon walk at Trail Wood with caretaker Vern Pursley. Some readings from Edwin Way Teale's "Walk through the Year" will be included along the trail. Free.

Full Moon Walks

Fri., May 30, 7:30 p.m.

Sat., June 26, 7:30 p.m.

Sun., July 25, 7:30 p.m.

Sun., Aug. 22, 7:30 p.m.

Get the nocturnal view of Trail Wood under the full moon. Catch the reflection of the moonshine off the beaver pond, listen for the denizens of the night and delight in the beauty of it all. Gather 'round the woodstove for a cup of tea. Fee: free CAS Members, \$3 Non-Members.



The "Summer House" at Trail Wood.

Celebrate Connecticut Trails Day

Sat., June 5, with bike rides at 10 a.m. & 2 p.m.

Cycle CT DEP's linear park, the Airline Trail, from Goodwin State Park (Route 6 in Chaplin) to Trail Wood and back. The round-trip ride is about 5 miles and the terrain is fairly flat. Must use your own bicycle. Free.

Tree and Shrub ID

Sat., July 10, 9 a.m.

Join Sanctuary Manager Andy Rzeznikiewicz as he identifies many of the trees and shrubs at Trail Wood. The leaves, bark, and fruits are the characteristics we will look at. Fee: \$5 CAS Members, \$10 Non-members.

Late Summer Bird Walk

Thurs., Aug. 26, 8 a.m.

Join Sanctuary Manager Andy Rzeznikiewicz as we search for various bird species. Maybe we'll find a mixed flock of early migrant warblers or flocks of young birds. Fee: \$5 CAS Members, \$10 Non-members.

Connecticut Audubon Society EcoTravel News

Day, Weekend, Domestic, and International Travel

Andrew Griswold, CAS Director of EcoTravel

860-767-0660 or 800-996-8747

ecotravel@ctaudubon.org

For Reservations or more information contact:

Andrew Griswold, *Director of EcoTravel*, or

Priscilla Wood, *EcoTravel Assistant*

Connecticut Audubon Society EcoTravel

35 Pratt Street, Suite 201, Essex, CT 06426

Phone: 860-767-0660 or 800-996-8747

E-mail: ecotravel@ctaudubon.org

Website: www.ecotravel.ctaudubon.org

Outstanding Optics and Gift Ideas: Travel Certificates and Binoculars!

If you have a special someone who needs a very unique gift or have someone who is just plain hard to shop for, consider giving them a Gift Certificate for Travel with Connecticut Audubon Society and Binoculars. Your special someone can apply their travel gift to any of our EcoTravel programs, day trips, workshops, museum tours or overnight travel. Give them a choice of one of our many destinations or pick one out for them yourself!

If you need help in selecting binoculars or a spotting scope, call us at EcoTravel. We are dealers for Swift and Vortex binoculars and the full line of Swarovski binoculars and scopes. We would be pleased to help you find the equipment that best fits your needs and budget. Inquire about our discounted pricing.

EcoTravel's Electronic Newsletter

If you would like to receive the EcoTravel Newsletter by e-mail, please drop us a note at ecotravel.ctaudubon.org. The Newsletter is frequently updated and is the best way for you to keep informed early about our exciting schedule of events.

The Ulric Hellmann Sponsorship Fund within the EcoTravel Program now makes travel available to teachers, students and families who would otherwise be unable to participate. It is important that Connecticut Audubon Society's programs are made as accessible as possible to everyone. If you are interested in making a donation to this fund or know of a worthy recipient, please contact Andrew Griswold at EcoTravel. All donations are tax-deductible.

Family Rates

Family travel can offer some of the most joyful and cherished experiences of our lives. Perhaps you can remember how a journey somewhere helped shape your own life, or helped create memories and understanding and love among family members. I know that holds true for many of us at Connecticut Audubon Society. But if you've ever traveled with your family to some of the world's wild places, you already know that there is no experience that brings people closer together. There's a real thrill that accompanies discovering wildlife and meeting people from different cultures in a friendly, easy way. That's the kind of atmosphere we try to create for families on all of our tours. Please call us about our special family rates.

Connecticut Audubon Society EcoTravel acts as a full-service travel agency and can help you with all of your travel needs, including something as simple as a flight, hotel or car reservation. If you find a trip offered by another company and would like to book that tour, you can sign up through CAS EcoTravel and help us to earn the commission monies. These funds support our environmental education and conservation programs. It costs you nothing additionally, but does so much to support our important mission. Most of these companies offer natural history and culturally based tours; some are quite elaborate. Your travel does not have to be with a company that offers only tours like ours. We can help you book golf vacations, scuba trips, island getaways, cruises, rafting tours, museum tours, academic tours and more, all while earning money to support Connecticut Audubon Society's programs! Give us a call and we would be happy to assist you in locating a qualified provider or creating a custom tour. By letting us help you, you will then help this very important mission! Please, contact us at 800-996-8747 or ecotravel.ctaudubon.org.

Search for Rarities

Have you ever wanted to search for a rare bird near Connecticut, but couldn't find directions or were concerned about going alone? Here's your chance to join CAS EcoTravel Rarities Expeditions. We'll provide the transportation, driver, company, experienced leadership and logistical arrangements. This is how it works: first, call EcoTravel to sign on. Then, when a "bird of significance" is in the area, EcoTravel will contact you with the chance to join the adventure. You have the option of coming along or waiting for the next big rarity. The fee will be determined by how far we have to drive for each bird. Call 800-996-8747 to get your name on the list! Call now so you will not miss out!

Custom Private Tours

We also offer you custom tour design assistance, including private tours for you, your family or a private group. We will make all arrangements for an economy trip to a high-end, all-inclusive tour, basic to gourmet. Our expert naturalist guides will take you and your group on a memorable adventure, all with your needs and desires in mind. All you need to do is pack your toothbrush! Give us a call if you would like more information on these special custom services and our suggested list of unique destinations. Life is too short not to get out and see what our natural world has to offer!

"Top 20 Conservation Priority" Bird Species of Connecticut Tours!

Join EcoTravel's expert naturalists as we continue our search for some of Connecticut Audubon's Society's "Top 20 Conservation Priority" bird species as identified in our *Connecticut State of the Birds 2009* report (www.ctaudubon.org/SOTB/index.html). We believe these bird species are "indicators" of where quality bird habitat can be found (and should be protected) in Connecticut, for the benefit of many at-risk bird, wildlife and plant species. We have designed many day trips and overnight tours that pay extra attention to these species while in the state, on their migration routes, or on their wintering grounds. Follow these species on their seasonal paths and sites, ones they have used for thousands of years. Understand

the global picture for these species: the perils they face here at home as well as when on the move and in their southern winter habitats. Look for this special designation for both our Day Trips and Overnight Tours. Join us as we celebrate Connecticut Audubon Society's "Top 20 Conservation Priority" Bird Species.

Day Trips

Central Park Spring Fling

Sat., April 24, 7:30 a.m.-5:30 p.m.
Springtime in Central Park! After a long winter of hibernation, the people, the birds and the animals are about. Join us as we revel in the birding and botany among the maples, oaks and elms, just a few of the trees that create a spectacular backdrop in spring. Head up to the Ramble, where migrating birds make their bi-annual stop, and try to get a glimpse of "Pale Male," the famous Red-tailed Hawk that lives in a building high above the Park. Enjoy all of the arches, bridges, statues and memorials, especially the memorial to John Lennon. Bring your binoculars, field guides, a bag lunch or money for lunch as our EcoTravel birders and botanist lead the way. Fee: \$65 CAS Members, \$75 Non-members.

Woodcocks and Courtship Display

Wed., April 28, dusk.
Join EcoTravel staff in Westbrook to witness the amazing mating ritual of American Woodcock. In a habitat of thickets and nearby clearings, the male woodcock performs its courtship flight for the female. He leaps up from the ground and starts an upward spiral flight that gets wider and wider until he is up about 300 feet in the air, where he hovers, then drops to the ground, landing with a nasal "beent" call and rejoining the female. Spectacular! Spring has arrived! Fee: \$20 CAS Members, \$30 Non-members.

Bartlett Arboretum & Japanese Stroll Garden

Thur., April 29, 8 a.m.-5 p.m.
Join Bob Kuchta for a full-day garden double-feature, beginning at Bartlett Arboretum and Gardens in Stamford, home to nine Connecticut Champion Trees, 14 Notable Trees and 100+ native and ornamental species. Once the home of noted dendrologist Dr. Francis A. Bartlett, the arboretum is a living museum of numerous specimen trees and plants displayed in several distinct natural habitats including woodlands, wetland, meadows and formal gardens. After a picnic lunch, we'll head to the Hammond Museum & Japanese Stroll Garden in North Salem, NY, just over the border. The "journey" through a Stroll Garden is meant to be a highly orchestrated voyage to a deeper understanding of nature. The Japanese garden invites contemplation, and every design element is carefully planned to give structure to an idea. The rocks, sand, water and plants create a microcosmic universe in which the whole is more than the sum of its parts. Fee: \$75 CAS Members, \$85 Non-members.

Spring Warbler Migration: See Our Selection Below!

May is the best time to see some of North America's most beautiful birds, the warblers. At this time of year, these tiny, brightly colored, insect-eating jewels of the bird world begin to return to their North American breeding grounds from Central and South America. Their journeys may involve non-stop flights covering more than a thousand miles at a time, so when they finally touch down they must feed vigorously to refuel. Warblers fly in flocks, sometimes called "waves," of several species, and their arrival creates a spectacle of brilliant colors. In addition, many male warblers sing high-pitched songs during migration, making them even more conspicuous. So grab your binoculars and your field guide and join us for any or all of the birding trips described below!

Birding Chatfield Hollow

Wed., May 5, 6:30 a.m.-1 p.m.
Join us as we quietly walk through Chatfield Hollow and welcome back warblers and other spring migrants. Chatfield Hollow

On-the-Water Birthday Party!

Here is a unique birthday party idea for someone who has it all and just needs time with friends and family in a beautiful setting. Let us arrange for a unique party that will include all the details of a gourmet meal (or bring your own), a great private cruise along the Connecticut River and into its

hidden back coves, plus our naturalists to entertain and enlighten your special birthday person and guests. You can add music and many other options to make this special day memorable. We can accommodate two to 40 guests. Call us to discuss details and book this unique birthday event for your special someone.



State Park, located in Killingworth, CT, is a long-time favorite spot for hikers, birders, swimmers and picnickers. Bring your binoculars, field guide and a picnic lunch. Fee: \$55 CAS Members, \$65 Non-members.

Annual Lyme Loop

Wed., May 12, 6:30 a.m.-3 p.m.
Travel through Lyme and Nehantic State Forest in search of neo-tropical migrants with EcoTravel director Andrew Griswold. The various habitats of the state forests include wetlands, streams and ponds, all excellent places in spring for the morning chorus of warblers, vireos and other songbirds. Bring your binoculars, field guides and a brown bag lunch. Fee: \$55 CAS Members, \$65 Non-members.

Selden Island: Botany, Birding, History

Sat., May 15, 9 a.m.-noon.
Join a historian, a botanist and a birder as we take a cruise along the Connecticut River to Selden Island, the largest on the Connecticut River and rich in history. Learn about local botany, geology and ornithology and perhaps you'll be lucky enough to see some of our resident Bald Eagles en route. Fee: \$45.

Harkness Memorial Park

Sun., May 16, 6:30 a.m.-1 p.m.
It's Migration Madness time and Andy Griswold will lead a birding group on the grounds of the Harkness family mansion, which sits on 230 seaside acres of sweeping lawns, stately trees and spectacular gardens. Take advantage of migration while warblers are in their spring plumage and singing away! Fee: \$55 CAS Members, \$65 Non-members. Bring your lunch.

Exploring Fisher's Island

Wed., May 19, 10 a.m.-8 p.m.
Don't miss this very popular day trip to Fishers Island, which sits between the eastern coast of CT and the tip of Long Island. Fisher's Island is accessible only by plane or ferry and serves mostly as a remote destination for summer vacationers in their exclusive island estates. We'll visit the Henry L. Ferguson Museum, a local oyster farm and tour the gated East End which is off limits to the public. Bring binoculars, field guides, a bag lunch and money for dinner. Fee: \$85 CAS Members, \$95 Non-members.

CT's Wine Trail & Western Highlands

Wed., May 19, 8 a.m.-5 p.m.
Connecticut's mild climate makes the state a fruitful place for growing grapes and the wine-making industry has bloomed in the past three decades. Join EcoTravel wine enthusiast Terry Wood as he leads a group through the vineyards of Litchfield County including CT's oldest winery, Haight-Brown Vineyards. Enjoy swirling and sipping as you overlook the picturesque Western Connecticut Highlands. We'll stop for dinner on the way home. Bring a bag lunch and money for dinner and tastings. Fee: \$85 CAS Members, \$95 Non-members.

Olive Lee Memorial Garden

Wed., May 26, 8 a.m.-5 p.m.
Join Bob Kuchta as he escorts you through the Olive Lee Memorial Garden. This wonderful little gem, tucked in the woodland setting of New Canaan, has narrow meandering paths edged with blooming bulbs, ephemerals, ferns, herbaceous plants, an extensive collection of specimen azaleas and rhododendrons, and mature trees providing lovely dappled shade. Boulder drifts, rocky ledges, and a seasonal stream add natural structure to the densely planted terrain. Bring a bag lunch, drink and field guides. Fee: \$75 CAS Members, \$85 Non-members.

Steep Rock Preserve

Wed., June 2, 9 a.m.-5 p.m.
Join botanist Bob Kuchta in Washington, CT. Nestled along the Shepaug River and surrounded by high hills, experience its river walks, fantastic views, serene woodlands, old utility roads and a horse farm. The highlight of the trail system is the Steep Rock Overlook, offering magnificent views of the valley below and the Shepaug River. Bob reassures travelers that the trail is "not that steep"! Bring lunch, beverage and field guides. Fee: \$75 CAS Members, \$85 Non-members.



A Bee Hummingbird in Cuba. Our next trip departs March 2011. Photo by Andrew Griswold.

Golden Wings!

Sat., June 5, 7 a.m.-5 p.m.
Expansive Sterling Forest has a wealth of different habitats that make it a paradise for birds and birders. Join a CAS naturalist and explore perhaps the best breeding warbler site within 100 miles and one of our favorite birding spots in June. Although just across the border in NY State, Sterling Forest is home to a wealth of species that are uncommon in CT. Hooded, Cerulean and Golden-winged Warblers should all be seen in decent numbers. Unfortunately, habitat loss and competition with the genetically similar Blue-winged Warbler have put serious pressure on the Golden-winged. Fee: \$75 CAS Members, \$85 Non-members.

Cruisin' the Poor Man's Amazon

Sat., June 12, 9 a.m.-noon
Join us aboard the RiverQuest as we cruise Selden Creek, one of the most biologically significant sites on the lower Connecticut River. The creek divides the mainland from 650-acre Selden Island State Park. Selden Creek is one of the most important tidal wetlands and provides a buffer area for roosting Bald Eagles in winter and a large variety of other birds and wildlife. Selden Creek is narrow and picturesque and much less inhabited by "river traffic," making for a serene and enjoyable adventure. Fee: \$40.

Elizabeth & Bushnell Park

Wed., June 16, 9 a.m.-4 p.m.
Join Bob Kuchta in Hartford's Elizabeth Park. Its 102 acres boasts many garden areas, pathways, greenhouses, lawns, a picnic grove, a pond and recreation areas. It was once owned by Charles M. Pong, a wealthy industrialist and statesman. He willed his estate to the City of Hartford, which now owns and maintains Elizabeth Park and employs the staff gardeners. The Friends of Elizabeth Park help support the City's work with volunteers and by funding projects. Bring lunch and drink. Fee: \$65 CAS Members, \$75 Non-members.

Scouring the Beach

Sat., June 19, 1-4 p.m.
Join Andrew Griswold on an exploration of the barrier beach known as Griswold Point in Old Lyme. Protected by the Nature

Conservancy, this narrow sand spit along Long Island Sound extends into the mouth of the Connecticut River. Osprey will be tending their nests. Enjoy some botanizing, birding and shelling. Fee: \$25 CAS Members, \$35 Non-members.

Hike Chatfield Hollow

Wed., July 7, 1-5 p.m.
Hike the trails in search of Indian caves, explore the jagged rocky ledges and relax by the cool waters as botanist Bob Kuchta leads us around Chatfield Hollow State Park. Chatfield Hollow Brook flows toward Long Island Sound between two high ridges covered with oak, beech and hickory trees. Bob will explain the flora and help participants learn how to identify the various trees and flowers. Bring a snack and drink. Fee: \$45 CAS Members, \$55 Non-members.

Cruisin' for Osprey Chicks

Sat., July 10, 9:30-11 a.m.
Enjoy one of the country's great conservation success stories in action as we cruise aboard RiverQuest to tour the lower Connecticut River in search of newly hatched Osprey chicks. We'll provide stories, insight and the history of the river, while describing the area's flora and fauna. We may be lucky enough to see a couple of the Bald Eagles that call this part of the river home. Fee: \$35.

Old Westbury Gardens

Sat., July 17, 8 a.m.-5 p.m.
Join Bob Kuchta on a tour of the Old Westbury Gardens. Listed on the National Register of Historic Places, these beautiful gardens are the former home of John S. Phillips. A magnificent Charles II-style mansion is nestled amid 200 acres of formal gardens, landscaped grounds, woodlands, ponds and lakes, and furnished with fine English antiques and decorative arts. Bring lunch and a drink. Fee: \$85 CAS Members, \$95 Non-members.

Day Cruise To Greenport – A "Top 20 Conservation Priority" Bird Species Tour

Wed., July 21 – all day!
Join Andrew Griswold on this very private and exciting adventure as you cruise across Long Island Sound in a 25-foot cuddly-cabin power boat. You will take in the sights and smells of the Sound and enjoy the plentiful birds that inhabit these waters. We'll lunch in Greenport, Long Island before circumnavigating Great Gull Island in search of Roseate and Common Terns, two of the bird species on CAS's "Top 20 Conservation Priority" list! This is an exclusive trip with a maximum of 4 participants. Fee: \$150 per person.

Sunset on the Sound

Thur., July 22, 2:30-8:30 p.m.
Board RiverQuest and cruise along the banks of the Connecticut River and down to Long Island Sound. EcoTravel naturalists will describe the history of the River and the birds and wildlife that inhabit the area. Binoculars are provided on board, so staff can help passengers see and identify the various creatures. The boat will dock at Saybrook Point for dinner at an area restaurant, then head back up the river for a relaxing trip and colorful sunset. Fee (includes dinner): \$100 CAS Members; \$125 Non-members.

Tyringham Cobble & Ashintully Garden

Sat., July 24, 8 a.m.-5 p.m.
What makes Tyringham Cobble a special place? Botanist Bob Kuchta will lead you through orchards and woodlands to



where ancient, twin formations of exposed bedrock offer panoramic vistas of the serene Tyringham Valley. A geologic wonder, the Cobble was born from massive tectonic movements that shifted ancient strata, leaving an exposed underbelly of rock atop a high ridge. You can follow a loop trail past rugged ledges to the summit, which emerges at a wildflower-festooned field, perfect for a picnic. On your drive to the reservation you'll pass through the village center of Tyringham and the pastoral scenery of Tyringham Valley. Wander through an intimate environment of outdoor sculpture and elegant gardens. Fee: \$85 CAS Members, \$95 Non-members.

Parker River NWR

Wed., July 28, 7 a.m.-9 p.m.
Parker River National Wildlife Refuge, in Newburyport, MA, is considered one of the best shorebird spots on the east coast and an important stopover for southbound migrating shorebirds, passerines and rarities. Scouring its spectacular beaches and salt pans for migrant shorebirds is a must for any serious birder. The 4,662-acre refuge is one of the few natural barrier beach-dune-salt marsh complexes left on the east coast. Established in 1942 by the USF&WS, Parker River is one of the gems of the NWR system. A must see! Fee: \$85 CAS Members, \$95 Non-members.

South Beach Shorebirds

Wed., Aug. 4, 7 a.m.-9 p.m.
Take in a full day of shore birding on one of the barrier islands off the coast of Chatham, MA. Join Andy Griswold on this popular annual trip, as you are ferried to this beautiful and vast island habitat populated by turnstone, many plover and sandpiper species, godwits, terns, and the rare and unusual. Be prepared to spend the day on the beach, and bring wading shoes, sunscreen, bug spray, bagged lunch, binoculars, scopes and field guides. A beautiful way to spend a warm summer's day. Fee: \$90 CAS Members, \$100 Non-members.

Sandy Point Shore Birds

Sun., Aug. 8, 1-5 p.m.
Join us as we visit one of CT's best known shorebird spots. Breeding Black Skimmers, Least and Common Terns are joined by Roseate, Forsters' and possibly Black Terns so this is the perfect time to visit. Shorebird

numbers can be substantial and there is a good potential to find something unusual. Fee: \$35 CAS Members, \$45 Non-members.

Skylands Arboretum

Wed., Aug. 11, 8 a.m.-5 p.m.
Nestled in the oak-and-hickory-forested Ramapo Mountains, stately Skylands Manor was no ordinary summer escape for investment banker Clarence McKenzie Lewis. Beginning with his purchase of the land in 1922, Lewis began to bring a dream to life. A trustee of the New York Botanical Garden, Lewis wanted his own garden and arboretum that would serve as a showplace and living laboratory to study plants from all over the world. In 1966, New Jersey purchased the estate and set about restoring Skylands, which was designated as the New Jersey State Botanical Gardens in 1984. Admire this botanical garden's various facets: aesthetic, public education, recreation, botanical research, conservation and community pride. Fee: \$75 CAS Members, \$85 Non-members.

Mianus River Gorge Preserve

Sat., Aug. 14, 8 a.m.-5 p.m.
Less than 40 miles from Manhattan, Mianus River Gorge Preserve in Bedford, NY remains an oasis of rich woodland and old-growth forest. The Preserve was established in 1953 to protect an old-growth hemlock forest; it is the first Nature Conservancy land project and the first national Natural Historic Landmark designated by the Interior Department. Today, the Mianus River Gorge Preserve, Inc. is an independent not-for-profit that protects over 750 acres of land and a water supply for over 150,000 people in CT and New York. Drawing on its rich history of science-based management and land conservation, it continues to be a model for the protection of rare, isolated habitat in an increasingly developed world. Fee: \$75 CAS Members, \$85 Non-members.

Overnight Shark Safari

Thur., Aug. 19-20 (evening departure).
EcoTravel is proud to provide a unique overnight trip for seafaring travelers. Join us on board the 80-foot "Seven B's V" in search of sharks including Blue, Mako, Thresher and Dogfish. (You never know when a Great White may appear!) Crew will be tagging sharks that are landed or brought alongside the boat. You'll have a great chance at view-

ing whales and pelagic birds. The "Seven B's V" has a full gallery serving breakfast and lunch. For adults and children 12 years and older; a great way to end the summer before the kids go back to school. Fee: \$225 CAS Members, \$275 Non-members.

Jamaica Bay

Sun., Aug. 22, 7 a.m.-3 p.m.
Take a trip to one of the Northeast's finest shore birding spots. This is a perfect opportunity to really come to grips with shorebirds. The variety on display at this time of year can be mind-blowing. With CAS experts to help, walk through the process of identifying shorebirds for yourself. Jamaica Bay provides a perfect "workshop," with a host of species that are much harder to find in CT. We'll also be looking for other denizens of the marshes including terns, herons and egrets. Fee (includes transportation): \$75 CAS Members, \$85 Non-members.

UConn Greenhouse & Campus Tree ID

Wed., Sept. 8, 9 a.m.-1 p.m.
Join expert botanist and tree-hugger Bob Kuchta for another "tree-rific" hike as he leads a trip to the UConn Greenhouses and a walk through the UConn campus which is filled with a large variety of tree species. Tree ID books are included. Fee: \$55 CAS Members, \$65 Non-members.

Wave Hill

Wed., Sept. 22, 8 a.m.-5 p.m.
Plantsmanship, aesthetic sensibility and human experience of the natural environment are the horticultural emphasis of Wave Hill's 28 acres of gardens, grounds and woodland. Botanist Bob Kuchta will guide you through this estate, once leased by Theodore Roosevelt's family and Mark Twain. Of winter at Wave Hill Twain wrote, "I believe we have the noblest roaring blasts here I have ever known on land; they sing their hoarse song through the big tree-tops with a splendid energy that thrills me and stirs me and uplifts me and makes me want to live always." Fee: \$85 CAS Members, \$95 Non-members.

Abby Aldrich Rockefeller Sculpture Garden at MOMA

Sat., Sept. 25, 7 a.m.-5 p.m.
The Abby Aldrich Rockefeller Sculpture Garden has long been considered the heart of the Museum of Modern Art. The installed

works of art represent a vision of modern sculpture from the end of the 19th century to modern times. The landscaped garden include celebrated works like Picasso's She-Goat and Giacometti's Tall Figure III as well as works by contemporary artists. The Sculpture Garden has always been central to the redesign of the Museum; architect Yoshio Taniguchi kept the garden as the focus of his plans. Taniguchi's new design affords unparalleled views of the garden. Fee (includes transportation, admission, guide): \$85 CAS Members, \$95 Non-members.

Planting Fields Arboretum

Wed., Sept. 29, 7 a.m.-5 p.m.
Botanist Bob Kuchta will drive you to the ferry and lead you across the Sound to Long Island's premier public arboretum and historic site, located in Oyster Bay. A former Gold Coast estate, the arboretum has 409 acres of greenhouses, rolling lawns, formal gardens, woodland paths, outstanding plant collections and original historic buildings including the 65-room Tudor Revival mansion, Coe Hall, which is open for tours. The Olmsted Brothers of Brookline, MA landscaped the grounds, which are spectacular. Fee: \$85 CAS Members, \$95 Non-members.

Swallow Spectacular

Sept.-Oct. (Exact dates to be announced.)
Remember to save an evening for one of our most popular events! Our "Swallow Cruises" sell out quickly so reserve early. On the Connecticut River we are lucky enough to be able to witness two spectacular avian happenings almost from our office window. The first is the spectacular concentration of eagles that join us to over-winter on the River. The other highlight is the Tree Swallow concentrations that can be found during fall migration, when hundreds of thousands of swallows congregate on the lower Connecticut River and at sunset settle in on a giant communal roost. The birds come from as far away as 25 miles and converge at dusk, often creating a "ballet" and "funnel" of birds before and as they settle down to roost. Renowned ornithologist and artist Roger Tory Peterson wrote, "I have seen a million flamingos on the lakes of East Africa and as many seabirds on the cliffs of the Alaska Pribilofs, but for sheer drama, the tornadoes of Tree Swallows eclipsed any other avian spectacle I have ever seen." Join our naturalists and journey down river to see the spectacular display. Bring a picnic supper, your favorite beverage and binoculars for this truly awe-inspiring display! Fee: \$40. (Please call us about small private charters for up to 6 people for this event.)

Overnight Tours

The Amazon – Our Most Popular Cruise!

Two departures each month; call for exact dates! (A one-night stay in Manaus is required before the cruise.) This trip explores some of the most untouched rainforest in the Amazon. On your 8-cabin expedition vessel you'll venture far up some of the least inhabited rivers in the Amazon Basin, exploring areas rarely visited. This is the most thorough, detailed, and sophisticated trip offered in the entire Amazon and comes with rave reviews from past EcoTravelers. Our guides are accomplished naturalists who will show you creatures almost never seen by other visitors. You will be visiting places that have not changed for millions of years. Truly the trip of a lifetime and an easy tour for seniors and families! Fee: \$2,400. Extensions available! Great trip!

Cornwall, England Walking Tour

April 27-May 8 – **12 Days!**
Immerse yourself in maritime heathlands, tropical valleys, moors, history and legends. Connect with nature on coastal paths, beaches and lanes, through carpets of brilliant pastel flowers and summer heathers, and in fields stitched together with hedges. Enjoy the quiet, clean air and fresh scents as we explore this land of Daphne De Maurier and Poldark on daily walks in the countryside. Learn about the flora and fauna, geology, historic sites, folklore, birds

and wildlife, back roads, foot paths, country tea houses and rural villages. Leaders are CAS's Priscilla Wood and popular British naturalist Martin Hunt. Fee: \$2,650, includes all transportation in England, meals, museum admissions and local guide services.

Point Pelee and Kirtland's Warbler North America's Rarest Warbler

May 16-22 – **7 Days!**
Point Pelee National Park, on Lake Erie's north shore, is the southernmost tip of Canada's mainland. It forms one of the most important migration highways in America and since 1918 has been preserved as a national sanctuary. It is located within the true deciduous forest region of North America commonly called Carolinian Forest. Canada's Carolinian Forest Zone consists solely of this narrow belt, with plants and animals that are rare or found nowhere else in Canada. The Point is perfectly situated as a migrant trap; its big attraction is the spring migration, especially passerines. Springtime can boast as many as 260 species; the highest single day count is 170 species! Over 40 warbler species have been seen here including Connecticut and Mourning, plus vireos, kinglets, thrushes, flycatchers and other songbirds. Birders will get a workout with sparrows, seeing Lincoln's, Fox, Vesper, and Savannah. After spending three days at the "Point" and surrounding areas we'll go to

Michigan, searching for the rare and endangered Kirtland's Warbler. What makes this species so special is its required habitat; it nests only in the Jack Pine ecosystem, found in only six to eight counties of northeastern Michigan. Much is being done to protect this species and habitat by numerous organizations: a total of 1,800 singing males were reported in 2009. Nesting areas are closed to public entry except through guided tours by the U.S. Forest and Fish & Wildlife Services. Fee: \$1,695 plus airfare.

The Connecticut Lakes: Origin of the Connecticut River

June 10-13 – **4 Days!**
A "Top 20 Conservation Priority" Bird Species Tour!
Explore the headwaters of the Connecticut River. Connecticut Lakes Region is wonderfully unique in many ways. It is a pristine region at the very tip of New Hampshire offering unlimited, unspoiled wilderness. It's the center of the North Country's fishing and hunting. Here the mighty Connecticut River is born, forming in its passage the Third, Second and First Connecticut Lakes and man-made Lake Francis. The historic "Indian Stream Territory" was once an independent nation established in 1832 during the border dispute between Canada and the U.S. Pittsburg township is the largest in the U.S. containing 300,000+ acres of timber-

land, mountains, lakes, streams and forest trails. Birds may include Spruce Grouse, Black-backed Woodpecker, Alder Flycatcher and more. Come experience nature at its best. Fee: \$898. Leader is Andy Rzeznikiewicz, Sanctuary Manager at the CAS Center at Pomfret.

Canada's Northern Territories: Wild Northern Adventure

Multiple Departures June-Sept!
The north is a region of diverse land forms, wildlife, geology, peoples and scenery. Stretching from Alaska across the Yukon, Northwest Territories and Nunavut, most of the Canadian continent lies above the 60th parallel -- the "Land of the Midnight Sun." Looking at a map, it becomes quite clear that the best way to explore, experience and hike through this vast land is via the rivers. Serving as fluid conduits, these beautiful waterways cut through the heart of the features that collectively form the "magnetic" north. For two decades, author and guide Neil Hartling and his skilled river guides have explored these waterways and discovered the great gems of the world. Call for details of the many different itineraries.

Alaska: The Ultimate Tour

June 6-17 – **12 Days!**
From the noisy seabird nesting cliffs of the Bering Sea's Pribilof Islands to the tundra birds of Denali National Park, explore Alaska's various birding habitats on this well-rounded tour. Spend three days on St. Paul Island in the Pribilofs, birding the cliffs, beaches and wetlands and observing

the concentration of Northern Fur Seals and their interesting social behavior. After returning to Anchorage, the remainder of the trip is along the road and marine highway systems. Travel through the coastal rainforest to Seward for a day-long boat trip into the spectacular Kenai Fjords National Park. Board a ferry for a trip across Prince William Sound to Valdez, then head north to the east end of the Denali Highway in the eastern Alaska Range to hike and get a first taste of interior birding. Then head to Denali National Park and spend a day observing Grizzly Bear, caribou, wolf, Golden Eagle, Long-tailed Jaegers and many other species. This trip is suitable for anyone in average physical condition with a sense of adventure and willingness to see Alaska on its terms. Lodgings will be rustic in some locations (cabins with separate bathrooms), B&Bs in most other. Fee: \$4,498.

Whale-Watching Cruise, Atlantic Puffins & Alcids

July 12-15

Whale watching may be one of the most exciting activities you may ever experience! You'll be amazed at these gentle yet awesome animals. Enjoy traveling aboard Maine's only high-speed catamaran. Naturalists will point out whales and other wildlife, including seals, eagles, porpoises, dolphins and a large variety of offshore seabirds including Atlantic Puffin. Revel in the scenic beauty of coastal Maine, its historic towns and hidden coves. Visit Mount Desert Island and Acadia National Park. Hike or just relax and take in the scenery. Fee: \$925. Overnight accommodations in or near Bar Harbor. Includes transportation from CT, lodging, boat fees and more. Call now as this trip is very popular. Leader is CAS's Priscilla Wood.

Arizona's Monsoon: Greening of the Desert

Aug. 14-22 – 9 Days!

For 10 months of the year southeastern Arizona's landscape is dominated by shades of brown. Except during a few brief winter months, all that breaks the monotony are verdant ribbons of cottonwoods and sycamores that follow watercourses, and greenish mesquites and live oaks at low and middle elevations. Come July, though, moisture from the Gulf of Mexico arrives and an amazing transformation begins. Now, lush grasses and wildflowers command all open space from valley floor to mountain peak, and the abundance of surface water spawns a wondrous variety of life. By early September the rains have ceased, and by October the land has once more reverted to desert. August is the month when birds, both species and individuals, are most abundant in southeastern Arizona, long considered a mandatory destination by serious birders. Grassland species like Cassin's and Botteri's Sparrows are in full song and nest-building. Sulphur-bellied Flycatchers, Blue Grosbeaks and Varied Buntings are in glorious abundance, while other area specialties, like Elegant Trogons and Thick-billed Kingbirds plus the regular breeders, have doubled or tripled their numbers. Fall migration is well underway, with shorebirds, gulls and terns showing up haphazardly at

pools and ponds created by rogue cloud-bursts, and flycatchers, warblers, sparrows and buntings moving through the vegetation like a river in flood. Hummingbirds are the real drawing card: a dozen species of these tropical jewels are possible in a few days. When you factor in the birds plus a knowledgeable, colorful leader, you have a memorable travel experience, regardless of your level of birding interest or expertise. Leader is Frank Gallo, CAS Coastal Center Director. Fee: \$1,998 plus airfare.

Grand Canyon & Sedona, AZ: Raptors, Rims & Rocks

Sept. 6-15 – 10 Days!

With the spectacular rock formations as your backdrop, enjoy scenic views of the South Rim of Grand Canyon National Park. Longstanding scientific consensus has been that the Canyon was created by the Colorado River over a 6-million-year period. Along with hikes and walks along the trails and in the park, learn about the history, animals and birds that inhabit one of "The 7 Natural Wonders of the World." After four days, we'll travel to Sedona via the East Rim. Characterized by massive red-rock formations, this area is considered at least as beautiful as many national parks. Located in the high desert, under the towering southwestern rim of the vast Colorado Plateau, the city of Sedona is blessed with four mild seasons marked by abundant sunshine and clean air. We'll visit Red Rock Country, hiking and exploring various canyons and parks. Sedona is well known for its "energy vortexes" and as a spiritual power center. Join us for a wide variety of experiences that will bring you close to nature. Experience a part of the country with millions of years of visible history in its colorful and natural surroundings. Fee: \$2,950 plus airfare.

California: Pelagics, Santa Cruz Island & Inland Hot Spots

Sept. 10-20 – 11 Days!

Late summer is an excellent season for birds. Migration is just starting and most California birders start searching for vagrants from the eastern U.S. or Asia. Tour Southern California from Monterey south to San Diego, searching a variety of habitats to pick up the expected California species and a surprise or two. Experience some of the best pelagic birding in North America with land birding in areas extremely varied in birdlife and terrain. We'll range from coast to mountain to desert to ocean on this eclectic tour, with multiple pelagic trips at peak season plus a visit to Santa Cruz Island to see the endemic Island Scrub Jay. Other stops include the Salton Sea for Yellow-footed Gull; Big Sur, home of the California Condor; and many places based on local Rare Bird Reports. Guides are experienced leaders Jay Hand, CAS's Andy Griswold and local experts. Fee: \$3,998. Limited to six participants.

Monhegan Island: Fall Migration Hot Spot

Sept. 23-26 – 4 Days!

Join Joe Bear on a relaxing tour of Monhegan Island at the height of migration season. Off the coast of Maine, it serves as a stopover point for birds caught out over open water. They drop onto the island to eat and rest for the day. There are no roads and no cars so

we'll hike the many walking trails searching for what arrived overnight. Nature and beauty are at their apex on Monhegan in the fall. Stay at the most lovely island inn and don't miss the blueberry pie! Limited to seven participants, so call early to sign up. Fee: \$925.

Block Island Weekend: Annual Migration Destination

Oct. 1-3 – 3 Days!

(Or schedule a private tour.) A "Top 20 Conservation Priority" Bird Species Tour! Explore the wilds of Block Island after most of the summer tourists have gone. Often a magnet for wayward birds, "Block" will delight travelers with its island architecture, wild flowers and natural beauty. Migration is at its peak, so expect to see lots of birds when the winds cooperate, like they did in 2007, carrying to the island thousands of warblers, rare sparrows, and vagrants, including a Western Kingbird! Experienced leaders will share their knowledge and enthusiasm for this special place as we visit the bluffs, light-houses, back roads, beautiful beaches and serene harbors. Group size is limited for the best travel experience. Fee: \$585. This is a trip many travelers make with us year after year!

Brazil's Pantanal

Oct. 12-23

Departs from N.Y.C. the evening of Oct. 12, returns the morning of Oct. 23. Iguacu Falls Extension and pre-trip Amazonia Cruise available. Journey to the Brazilian Pantanal, the world's largest freshwater wetland and some of the richest wildlife viewing in the Americas! Covering 360,000 square miles, the Pantanal is a huge wilderness region of wetlands. Its complex of aquatic and terrestrial environments and varied topography result in an extremely rich fauna. The variety of birds is astounding, touting 26 species of parrots including the endangered and beautiful Hyacinth Macaw, the world's largest. The Pantanal is also a refuge for many threatened mammals like Jaguar, Ocelot, Maned Wolf, Giant Anteater and Giant River Otter! Travel at the peak time for wildlife viewing. Fee: \$3,598 plus airfare, includes all meals, hotels and ground transportation. Leaders are CAS's Andrew Griswold and Brazilian guide Braulio Carlos. (Call for pricing on the Iguacu Falls Extension, considered by many as one of the Natural Wonders of the World. Four times the width of Niagara Falls, Iguacu Falls are divided by various islands into separate waterfalls; a perpetual veil of spray draped high over the falls. Not to be missed!)

Cape May Migration: Nature's Jewels & Victorians

Oct. 15-17 – 3 Days!

Cape May is without a doubt, one of the Top 10 birding spots in the country. Every fall, hundreds of thousands of migrating birds funnel at the southern tip of New Jersey and birdwatchers come from all over the world to enjoy the diversity of hawks, shorebirds and warblers and the scenic beaches, meadows and lively historic town. Southbound migrants often make landfall in outstanding numbers, stopping here to rest before heading further south. Warblers and other songbirds are the stars of the Cape May show but shorebirds and herons are also abundant. Peregrine Falcons, Royal Terns and Little Blue

Hérons are just a few of the birds you might see. The town of Cape May features blocks and blocks of Victorian houses and hotels minutes away from the beach. Stay in a clean, modern motel located close enough to town to enjoy the historic atmosphere. Fee: \$585.

Land of the Polar Bear: Migration of the Largest Land Carnivore

Nov. 4-11 – 8 Days!

This trip always sells out so call now! Our northern expedition starts in Winnipeg, Manitoba where travelers enjoy a tour of the city and visit its many museums, including the well-known Museum of Man and Nature. The flight to Churchill, on Hudson Bay, will take travelers to the land of the Polar Bear. We'll travel on the tundra in specially equipped tundra vehicles to get the best possible views of the bears in their spectacular habitat. Helicopter tours, searches for northern lights, a visit to the Eskimo Museum and sled dog tours are some of our optional activities. Leader Pat Rousseau has worked as a Park Warden for the Canadian National Park Service for over 30 years and is a wealth of knowledge! Fee: \$4,495, includes airfare from Winnipeg to Churchill.

Louisiana Swallow Tornado: A 5-Million-Bird Ballet!

Nov. 15-19 – 5 Days!

Tree Swallows seemingly magically appear until the entire sky is filled. On some evenings, however, there can be one very obvious difference. Whereas, there were hundreds of thousands of Tree Swallows leading up to the event, there could now be millions. By some estimates, you can see two to five million swallows in one evening. Comparing this to the estimate of the North American Tree Swallow population (20 million), at least 10% of the world's population of Tree Swallows can be spending the night at this southern roost site. This swallow tornado is likely the most under-appreciated natural phenomenon in the U.S. The cost of this wonderful journey is \$1,430 from New Orleans, based on double occupancy and a minimum of five participants, and includes land transportation in Louisiana, all accommodations, specified meals, professional guides and local park and refuge fees. Call today to reserve your spot.

Tanzania Safari

January 2011 – 13 Days!

Reserve your spot as this trip will fill! Join us in East Africa on our spectacular Tanzania wildlife safari. It's the best time to view the animals of the Serengeti: Lions, Cheetahs, Hyenas and other predators are especially visible. We'll also visit Ngorongoro Crater, described as the eighth Wonder of the World; Lake Manyara National Park in the Great Rift Valley; and Olduvai Gorge, where Richard and Mary Leakey made their famous discoveries of early hominids. You'll be accompanied by CAS senior naturalist Milan Bull, who has led trips throughout the world for many years. Miley's leadership and knowledge will add immeasurably to your experience. Outstanding driver-guides will also have a wealth of information to share. Accommodations will be in hotels and lodges. Participants travel by four-wheel-drive vehicles equipped with roof hatches, so everyone is guaranteed a window seat. Call for fee and other details.

More 2011 Overnight Tours

• Minnesota: Winter Specialties, Bogs & Northern Forests

Jan. 31-Feb. 5, 2011 – 6 Days!

• Classic Costa Rica: Birding in Paradise

Feb. 2011 – 12 Days!

• Montauk, Long Island: Weekend Escape

Feb. 2011 – 3 Days!

• Cuba Bird Survey Program A "Top 20 Conservation Priority" Bird Species Tour!

March 2011 – 12 Days!

• The Galapagos: Islands of Discovery

April 2011 – 10 Days!

(Ecuador pre-trip – 4 Days!)

• Colorado Grouse Tour

April 2011

• Sensational Mt. Auburn in Cambridge, MA: Migration Madness!

May 2011 – 4 Days!

• Iceland: Land of Ice and Fire

June 2011 – 12 Days!

• The Pacific Northwest: Island Hopping & Olympic National Park

July-Aug. 2011 – 9 Days!

• Nova Scotia Escape: Shorebird Migration

July-Aug. 2011 – 9 Days!

• California: Pelagics, Santa Cruz Island & Inland Hot Spots

Sept. 2011 – 11 Days!

• Monhegan Island: Fall Migration Hot Spot

Sept. 22-25, 2011 – 4 Days!

• Block Island Weekend: Annual Migration Destination

Sept. 30-Oct. 2, 2011 – 3 Days!

A "Top 20 Conservation Priority" Bird Species Tour!



CONNECTICUT AUDUBON SOCIETY MAY-AUGUST 2010 NEWSLETTER

(Left to right): On our March 7-18 EcoTravel trip to Cuba, participants may see a Bee Hummingbird, one of this Caribbean nation's 25 endemic species (see page 14); photo by Andrew Griswold. Adults can bring their 2- and 3-year-olds to any or all eight "Nature Nursery" programs at our Birdcraft Museum in Fairfield (see page 8); photo by Abigail Ray Koziel. The 233-acre Morgan R. Chaney Wildlife Sanctuary in Montville is one of 19 wildlife sanctuaries that Connecticut Audubon Society owns and manages statewide (see page 3); photo by John Laiacone. Don't miss our Center at Fairfield's popular "Feeding Frenzy" and "Meet the Animals" programs (see page 6); photo by Mara Neville.



Become a Member of Connecticut Audubon Society

The Birds of Connecticut and their Habitats are in Crisis
and You Can Make A Difference! Become a Member Today.

JOIN OR RENEW at any level and receive a **FREE \$7 Gift Card** from one of the following:

L.L.Bean 
EASTERN MOUNTAIN SPORTS®



Photo: Blue Jay by Jayne Gulbrand.

Join or Renew Today!

Name: _____
Address: _____
City, State, Zip: _____
Phone: _____
Email: _____

I will submit information for this gift to be matched by my business.

Choose free \$7 gift card option to be emailed to you:

L.L.Bean Amazon.com Eastern Mountain Sports

Method of Payment:

Check enclosed MasterCard Visa

Name on Card: _____

Signature: _____

Card Number: _____

Exp. Date: _____

New Member Renewal of Membership



Cut out and mail to:

Connecticut Audubon Society
Membership Services

2325 Burr Street, Fairfield, CT 06824
or call 203-259-6305 Ext. 105

You can also join or renew online at
www.ctaudubon.com

A Special Gift that family & friends can open all year long!

Giving a *Connecticut Audubon Society* Membership to relatives or friends is the perfect way to give a gift that lasts all year long!

Your Gift Recipient will enjoy the many membership benefits of *Connecticut Audubon Society*, including:

- Our *Connecticut Audubon Society* electronic news bulletins
- Advance notices and Member discounts on programs, products and trips
- Free access to CAS Centers, our historic Birdcraft Museum & Wildlife Sanctuaries

You can also give a Gift Membership online at:
www.ctaudubon.org

**New Members
Receive a
Pocket Guide
to Connecticut
Birds
FREE!**



Connecticut Audubon Society Gift Membership

Fill out the form below with your name and the gift recipient's information

An announcement of your gift, a Member card and an information packet will be sent, per your instructions below.

Please check one:

Mail the Gift Member's packet to the gift recipient.

Mail the Gift Member's packet to me.

Please check one:

Send free bird book to gift recipient.

Send free bird book to me.

YOUR Name _____ City: _____ State: _____ Zip: _____

Address: _____ Phone: () _____ E-mail: _____

Become a Member yourself or renew your own Membership: Family \$55/Year Individual \$40/Year

Print GIFT RECIPIENT'S name here:

Want a special greeting on our gift announcement? Print it here:

Name: _____

Address: _____

City: _____

State: _____ Zip: _____

Type of Gift Membership: Family \$55/Year Individual \$40/Year

Want to give a gift to another person? Please use a separate piece of paper.

Method of Payment: Check enclosed MasterCard Visa Total Amount: \$ _____

Name on Card: _____ Signature: _____

Card Number: _____ Exp. Date: _____

Cut out and mail to: Connecticut Audubon Society Membership Services
2325 Burr Street, Fairfield, CT 06824 (or call 203-259-6305, ext. 105)

